

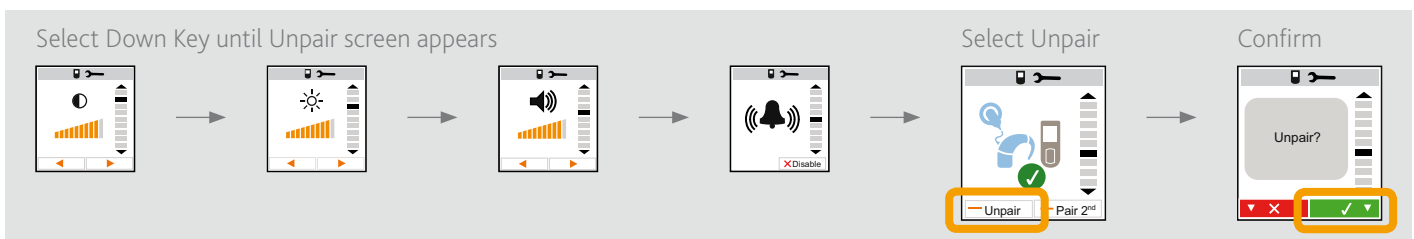


# Quick Guide to the CR110 Remote Assistant

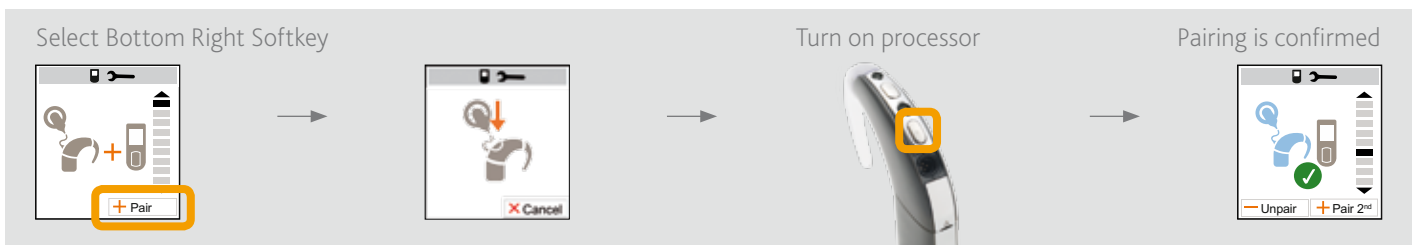
## Pairing a new CP810 Sound Processor to your remote assistant at home

Before your remote assistant will work with your new processor you need to "pair" them up:

1. Ensure that your new processor is **switched off**.
2. **Switch on** your remote assistant by holding down the **Cochlear Home Key**.
3.  This icon showing the processor is out of range will appear.
4.  Press the **Cochlear Home Key** until you see this icon in the top right of the screen showing a remote assistant and spanner.
5. Select this icon option by pressing the **Top Right Softkey** with one quick press.
6. Press the **Down Key** until the "Unpair" option screen appears:



7. Select "Unpair" by pressing the **Bottom Left Softkey**.
8. Then select the **Bottom Right Softkey** (green tick) to confirm you wish to Unpair. You are now unpaired from your old processor.
9. The screen will change to show the Pair screen (shown below on the left).
10. Select the **Bottom Right Softkey** to pair to your new processor.
11. When the **screen icon changes** to show a processor you should **turn on the new sound processor** by pressing and holding down the lower button on the processor.
12. The screen will change to indicate when the pairing is complete (shown below on the right).



13. Press the **Cochlear Home Key** to go back to the Home screen.

Should any problems persist please refer to the User Guide or contact your CI centre

Phone \_\_\_\_\_